

## APPENDIX 1: SCHEDULE OF ACTIVITIES (11 August - 1 September 2000)

Date	Activities
11	- JHU team arrives in Kampala in a.m. - WV Kampala team briefs JHU team
12	- JHU team carries out final planning for training and study
14	- JHU and WV Kampala team flies to Gulu - Meeting with Leaders of Camp "Alpha" and explanations of study
15	- Training: Introductions, Schedule of Study, Objectives of Study, Expectations - Training: Overview of qualitative & participatory studies; Interviewing
16	- Training: Interviewing demonstration and role play - Training: Review of training in local language (Luo)
17	- Community Mapping (2 Teams) - Timeline (1 Team)
18	- Walkabout around the camp for observation
19	- Free Listing: Main difficulties facing persons living in the camp
21	- Pile Sorting: Main difficulties facing persons living in the camp
22	- Pair-Wise Ranking: Priorities among difficulties facing persons in the camp
23	- Venn Diagram: Stakeholders for the problem of <i>Kec</i> (hunger)
24	- Data Management and Analysis
25	- Public Meeting: Presentation of findings - priority problems
26	- Action Planning with Camp Action Committee - Problem Tree
28	- Action Planning with Camp Action Committee - Solution Matrix, Plan
29	- Action Planning with Camp Action Committee - Action Plan - Public Meeting: Presentation of Action Plan
30	- Return to Kampala - Report Writing
31	- Report Writing
1	- Report Writing - JHU team returns to USA

**APPENDIX 2: DATA COLLECTION METHODS BY NUMBER OF INFORMANTS INTERVIEWED (OR PARTICIPATING IN GROUP DISCUSSIONS) & LOCATION/TYPE OF RESIDENCE**

Data Collection Method	Type of Residence (Zone No.)						
	More Congested Zones			Mixed Congestion Zone	Less Congested Zones		
	2a	2b	8	1	9	5	7
Community Map* (2 groups mixed of age and gender)	15	15		30			
Timeline* (1 group mixed of older men and women)				43			
Walkabout (6 observations - no formal interviews)	X	X	X	X	X	X	X
Free Listing (20 interviews)	1	2	5	3	5	3	1
Pile Sorting (13 interviews)	2	2	2	3	4		
Pair-Wise Ranking* (1 group of women, 1 group of men)	2	2	2	2	2	3	3
Venn Diagram* (1 group of women, 1 group of men)	2	3	3	3	3	3	3
Total (by individual zone)	22	24	12	84	14	9	7
Total (by zone type)	58			84	30		

\* Estimated number (Note: group exercises have persons coming and going and it becomes difficult to record exact numbers by zone)

**APPENDIX 3: DATA COLLECTION METHODS BY NUMBER OF INFORMANTS (OR PARTICIPANTS IN GROUP DISCUSSIONS) & GENDER**

Data Collection Method	Gender	
	Female	Male
Community Map* (2 groups mixed of age and gender)	25	35
Timeline* (1 group mixed of older men and women)	26	17
Walkabout (6 observations - no formal interviews)	–	–
Free Listing (20 interviews)	10	10
Pile Sorting (13 interviews)	6	7
Pair-Wise Ranking* (1 group of women, 1 group of men)	9	7
Venn Diagram* (1 group of women, 1 group of men)	6	14
<b>Total</b>	<b>82</b>	<b>90</b>

\* Estimated number (Note: group exercises have persons coming and going and it becomes difficult to record exact numbers)

**APPENDIX 5. FREE LISTING RESULTS: PROBLEMS MENTIONED BY AT LEAST 30 PERCENT OF INFORMANTS (n = 20)**

*Free List Question: What are the difficulties faced by persons living in “Camp Alpha”*

<b>Problem Mentioned</b>	<b>Frequency</b>	<b>Percent</b>
<b><i>Kec</i></b> (hunger)	<b>16</b>	<b>80</b>
<b>Lack of land for cultivation</b>	<b>14</b>	<b>70</b>
<b><i>Lweny</i></b> (insecurity)	<b>8</b>	<b>40</b>
<b><i>Two</i></b> (sickness)	<b>8</b>	<b>40</b>
<b><i>Can</i></b> (poverty, lack of resources, money)	<b>8</b>	<b>40</b>
<b>Congestion</b>	<b>7</b>	<b>35</b>
<b>Lack of Drugs</b>	<b>6</b>	<b>30</b>

**APPENDIX 6. PILE SORTING RESULTS: DIFFICULTIES FACED BY PERSONS LIVING IN "CAMP ALPHA" (n = 13)**

<b>Problem</b>	<b>1</b>	<b>2</b>	<b>3</b>	<b>4</b>	<b>5</b>	<b>6</b>	<b>7</b>
<b>1</b>	X <sub>1</sub>						
<b>2</b>	5	X <sub>2</sub>					
<b>3</b>	8	6	X <sub>3</sub>				
<b>4</b>	0	1	1	X <sub>4</sub>			
<b>5</b>	7	6	5	1	X <sub>5</sub>		
<b>6</b>	4	8	5	3	2	X <sub>6</sub>	
<b>7</b>	1	0	0	9	2	2	X <sub>7</sub>
<b>Problem</b>	<b>1</b>	<b>2</b>	<b>3</b>	<b>4</b>	<b>5</b>	<b>6</b>	<b>7</b>

Key to Problem Numbers in Table:

- (1) "KEC" (lack of food)
- (2) "LWENY (Insecurity)
- (3) LACK OF LAND FOR CULTIVATION
- (4) "TWO" (Sickness)
- (5) "CAN" (Poverty)
- (6) CONGESTION/CROWDING
- (7) LACK OF DRUGS

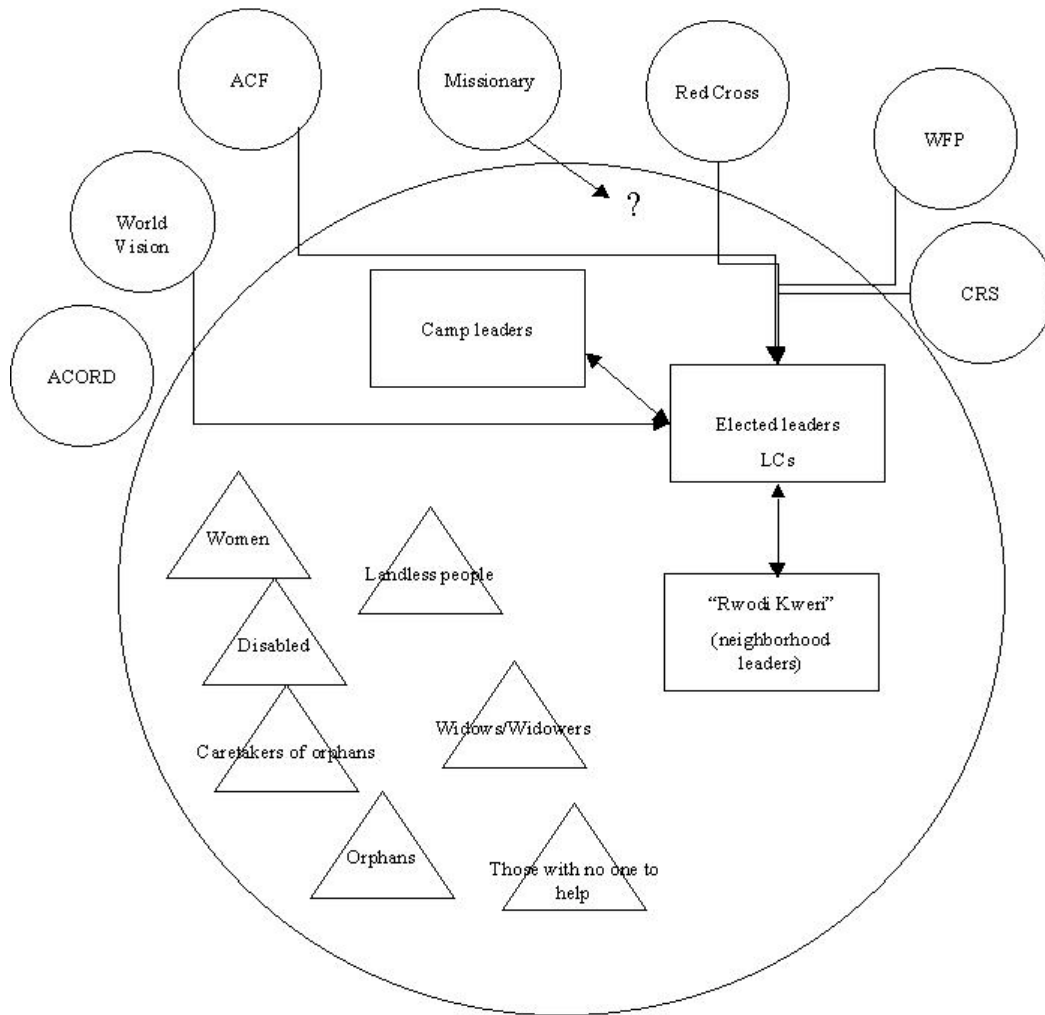
**APPENDIX 7. PAIR-WISE RANKING RESULTS: DIFFICULTIES FACED BY PERSONS LIVING IN “CAMP ALPHA” (Group of Nine Women from Each Zone)**

PROBLEM	1	2	3	4	5	6
	“Kec”	Lweny	Lack of land	“Two”	“Can”	Congestion
"LWENY" INSECURITY	Lweny	X				
LACK OF LAND	Land (3) 'Kec' (1)	Lweny	X			
"TWO" SICKNESS	'Kec' (6) 'Two'(2)	Lweny	Sickness	X		
"CAN" POVERTY	'Kec'	Lweny	Poverty	Poverty	X	
CONGESTION	Congestion	Lweny	Congestion	Congestion	Congestion	X
<b>TOTAL</b>	2	5	1	1	2	4
<b>RANK</b>	3	1	6	5	4	2

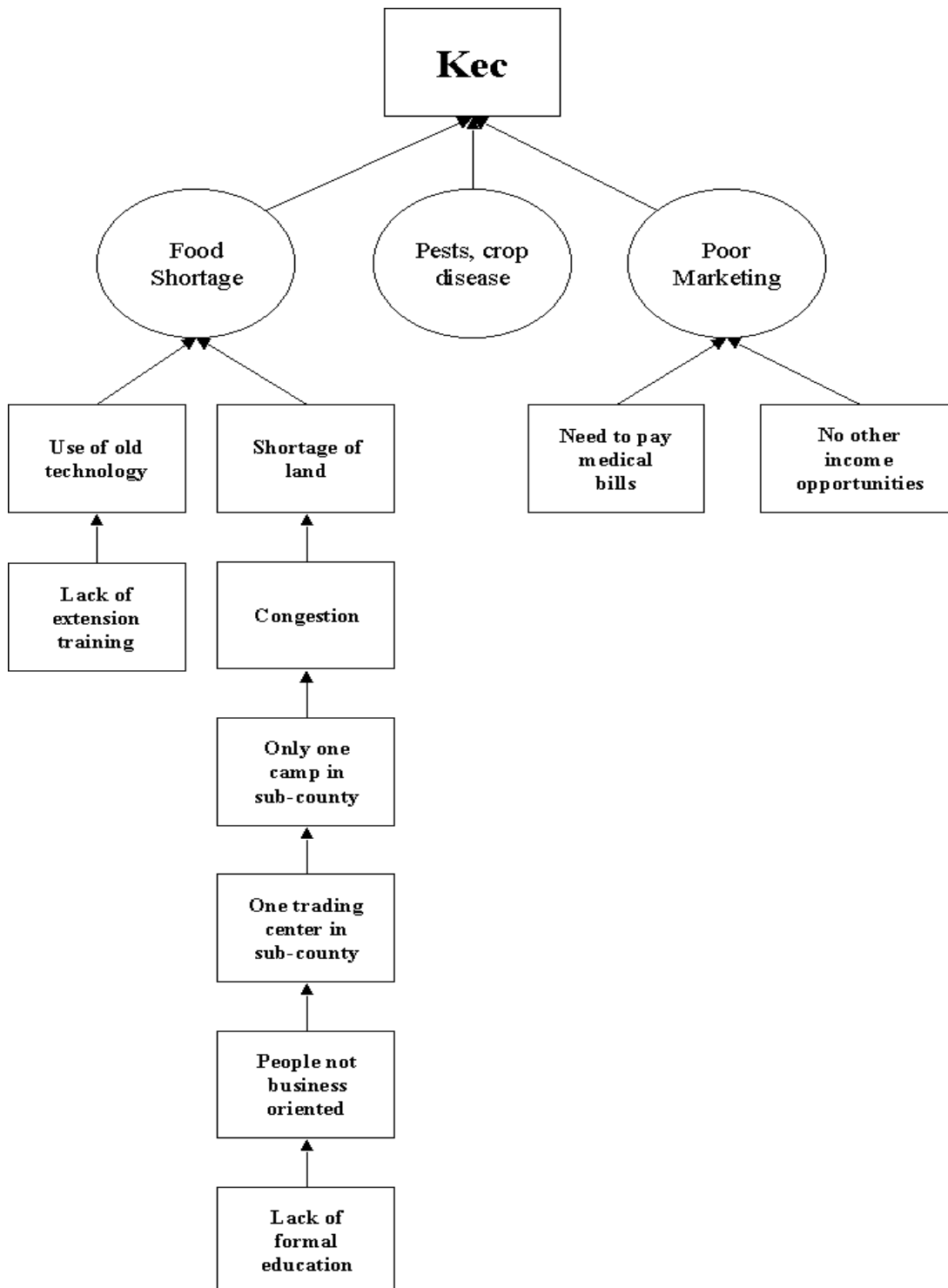
**APPENDIX 8. PAIR-WISE RANKING RESULTS: DIFFICULTIES FACED BY PERSONS LIVING IN “CAMP ALPHA” (Group of 7 Men from Each Zone)**

	1	2	3	4	5	6
<b>PROBLEM</b>	“Kec”	Lweny	Lack of land	“Two”	“Can”	Congestion
"LWENY" INSECURITY	Lweny	X				
LACK OF LAND	Lack of Land	Lweny	X			
"TWO" SICKNESS	Two	Lweny	Two	X		
"CAN" POVERTY	Kec	Lweny	Lack of Land	Two	X	
CONGESTION	Congestion	Lweny	Congestion	Congestion	Congestion	X
<b>TOTAL</b>	1	5	2	3	0	4
<b>RANK</b>	5	1	4	3	6	2

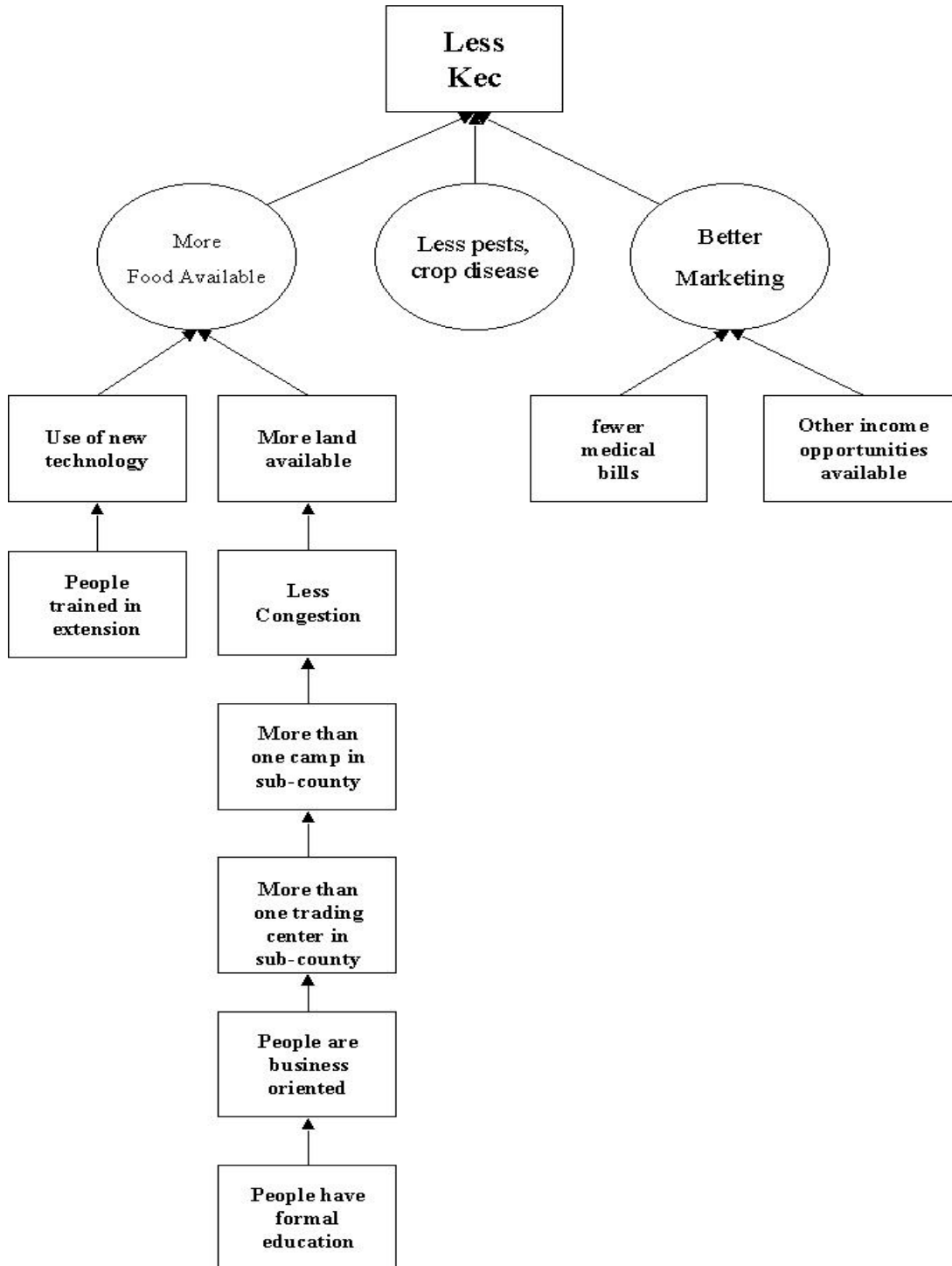
**APPENDIX 9. VENN DIAGRAM: 'STAKEHOLDERS' FOR THE PROBLEM OF KEC (HUNGER) (GROUP OF SIX WOMEN)**



**APPENDIX 10. PROBLEM TREE - PROBLEM OF *Kec* (HUNGER)**  
*(Produced by Camp Action Committee)*



**APPENDIX 11. OBJECTIVES ANALYSIS TREE - PROBLEM OF KEC (HUNGER)**  
*(Produced by Camp Action Committee)*



**APPENDIX 12. SOLUTIONS MATRIX: TRAINING IN AGRICULTURAL EXTENSION TO ADDRESS THE PROBLEM OF *KEC* (HUNGER)**

*(Produced by Camp Action Committee)*

Solution	Sustainability	Equitability	Productivity	Overall
<b><i>Disseminate New Technology</i></b>	<b>3</b>	<b>2</b>	<b>3</b>	<b>8</b>
Recruit extension staff	2	1	3	6
Make farm tools available	2	1	3	6
Make chemicals available and knowledge for use	2	1	2	5
<b><i>Training center in Camp Alpha</i></b>	<b>3</b>	<b>3</b>	<b>3</b>	<b>9</b>
<b><i>Fast yielding seeds</i></b>	<b>3</b>	<b>2</b>	<b>3</b>	<b>8</b>
Demonstration plots	1	1	1	3
<b><i>Peer groups</i></b>	<b>3</b>	<b>3</b>	<b>3</b>	<b>9</b>
<b><i>Model Contact Farmers</i></b>	<b>3</b>	<b>3</b>	<b>3</b>	<b>9</b>
Loan Management (crop finance loans)	1	1	2	4
Marketing	2	1	2	5
Post-harvest handling	2	1	2	4
Study tour of other extension sites	1	1	1	3
Competitions	1	2	2	5
Animal husbandry	1	1	1	3
Continuous cultivation	1	1	3	5

**APPENDIX 13. ACTION PLAN: TRAINING IN AGRICULTURAL EXTENSION TO ADDRESS THE PROBLEM OF KEC (HUNGER)**

*(Produced by Camp Action Committee)*

**ACTION PLAN FOR FIVE SOLUTIONS**

- Disseminate New Technology
- Training center in Camp Alpha
- Fast yielding seeds
- Peer groups
- Model Contact Farmers

Action	By Who	By When	Resources
<b><i>Training Center in Camp Alpha</i></b>			
Locate site for training center	Mr. Oceng B	4 Sep 00	Compensation
Submit application to build on site	Mr. Oceng B	4 Sep 00	Fee: 5,000sh
Follow-up on the application	Mr. Oceng B	24 Sep 00	None
Site plan developed by urban planner for sub-county	David/ Fred (WV)	5 Nov 00	Fuel, lunch, fees, stationary
Building Plant Bill of Quantity	David/ Mr. Otim (WV)	5 Nov 00	Fee, stationary, lunch, fuel
Identify a constructor	Mr. Omona / Mr. Otim (WV)	19 Nov 00	Fuel, lunch, stationary
Mobilize local resources	Mr. Olyel J.	2 Dec 00	Brick, Sand, Stones, Labor
Investigate funding for external resources & report back	James (WV)	10 Sep 00	None
Clearing the site and delivering materials to site	Mr. Olyel	23 Dec 00	Transport, Labor, Stationary, Lunch

Action	By Who	By When	Resources
Begin actual construction of training center building: <ul style="list-style-type: none"> <li>• Foundation</li> <li>• Floor level</li> <li>• Wall plate level</li> <li>• Roofing</li> <li>• Finishing</li> </ul>	Mr. Onoma Mr. Otim (WV)	5 Jan 01 5 Feb 01 5 Mar 01 26 Mar 01 26 Jun 01	Bricks, cement, stones, sand, tools, labor, water, construction fee, lunch, transport, timber, nails, iron sheets, DPC, vent tiles, iron bars, binding wire, paint, ceiling boards, windows & doors
Monitoring of action plan	Rose / James (WV)	ongoing	Fuel, lunch, stationary
Furnishing the center	Mr. Omona / James (WV)	1 Jul 01	Chairs, tables, cubbards, bench, desks
Commissioning of the center	David / Joseph (WV)	1 Aug 01	Fuel, food, beverages, announcement, etc.
<b>Model Contact Farmers (Includes: disseminate new technology, peer groups, fast yielding seeds)</b>			
Identify 10 MCFs per parish (60 people)	Mr. Ochenyol Langol (WV) / GOU sub-county extension workers	14 Sep 00	Stationary, transport
Train Model Contact Farmers	2 WV extensionists / GOU sub-county extension workers	1 Jul 01	Stationary, lunch, strings, seeds, tools, tape measure
Identify and form groups	Ocheng Langol (WV) / GOU sub-county extension workers	14 Oct 00	Stationary
Train groups	2 WV extensionists / MCFs / GOU sub-county extension workers	10 Dec 01	Stationary, lunch, string, tape measure, seeds, tools, allowances
Study Tour	Mary Oola / Ocheng Langol (WV)	30 May 01	Transport, stationary, meals

Action	By Who	By When	Resources
Establish demonstration sites in each parish	MCFs, Groups	30 Oct 00	Plots, stationary, tools, lunch, seeds
Competitions (MCFs, parishes, groups)	Mr. Omona / Ocheng Langol (WV) / sub-county executive	8 June 01	Stationary, transport, lunch, prizes, allowances
Explore ways of availing INPUTS to MCFs of Groups	Obiya	5 Feb 01	Transport, stationary, lunch, allowances.
Explore ways of multiplying seeds at the sub-county level (using the MCFs, groups)	Langol (WV)	30 Oct 01	Transport, seeds/cuttings, allowances, lunch
Monitoring	Mr. Ojara / Langol (WV) / sub-county extensionists	Ongoing	Stationary, lunch, transport

**APPENDIX 14. TIMELINE DIAGRAM (1986-2000) FROM ZONE 1 RESIDENTS**

YEAR	EVENT
1986	<ul style="list-style-type: none"> <li>(1) War broke in</li> <li>(2) Men were killed and some women were left widows.</li> <li>(3) Widows had problems raising their children and securing family survival. Some widows were forced to move to town</li> <li>(4) People started to move out from their homes. People move out leaving their animals, food and land.</li> <li>(5) The food in the granaries and gardens was taken by the armed forces.</li> <li>(6) Livestock and animals (e.g. chicken, goats, cows) were taken by the government armed forces.</li> <li>(7) Decrease in livestock, chicken.</li> <li>(8) Loss of crops because of conflict</li> <li>(9) The rebels came into the area and burnt houses.</li> <li>(10) Lack of medicines and medical facilities (when war broke in)</li> <li>(11) Children fell sick as a result of lack of drugs and access to health.</li> </ul>
1987	<ul style="list-style-type: none"> <li>(1) Violence and rampant killings by rebels.</li> <li>(2) Houses were burnt</li> <li>(3) Lack of food</li> <li>(4) Exodus into main towns. People left home because of lack of food and insecurity.</li> <li>(5) People were left with physical evidences of violence (scars and mutilated)</li> <li>(6) Increased number of widows and orphans.</li> <li>(7) Loss of livestock. Livestock was taken by the government</li> </ul>
1988	<ul style="list-style-type: none"> <li>(1) Government took Acholi people into prison. Some were killed.</li> <li>(2) Some people returned to the former home village but they were forced to go to the camps.</li> <li>(3) Livestock and food were taken from the people.</li> <li>(4) Houses were burn.</li> <li>(5) No [functioning] schools available</li> <li>(6) No hospitals available.</li> <li>(7) People were forced to go to the bush</li> <li>(8) Rebels killed many people and take their property</li> <li>(9) Rebels start abducting children.</li> <li>(10) Increased number of widows and orphans</li> <li>(11) Burning of people's huts</li> <li>(12) Peace agreement Government-Rebels</li> <li>(13) The remnants of rebels regrouped into the "Holy Spirit" movement</li> </ul>
1989	Abduction of children continues
1993	<ul style="list-style-type: none"> <li>(1) Many people were arrested by the government as rebels suspects or as "collaborators".</li> <li>(2) Many people had to stay in prison for years (and they were innocents)</li> <li>(3) Torture by the government</li> <li>(4) Civil servants were retrenched. The civil servants were suffering long before the retrenchment. In this year they lost their condition of civil servants.</li> </ul>

YEAR	EVENT
1996	<ul style="list-style-type: none"> <li>(1) People live under threat from insecurity and diseases.</li> <li>(2) The Kony rebels kill people and abduct children over 8 years old.</li> <li>(3) The rebels commit torture and mutilation (mainly facial and genital).</li> <li>(4) Rebels capture people and forced them to carry heavy loads.</li> <li>(5) People are being beaten and killed by the rebels.</li> <li>(6) Women who worked in the field are subjected to rape, torture and taken to carry looted luggage's for rebels</li> <li>(7) Violence in the villages. Bombing force Acholi to move to the camps.</li> <li>(8) The government forced Acholi people to go to the camp.</li> <li>(9) People from different places move into the camps.</li> <li>(10) Government takes away food from civilians (goats, chicken, etc)</li> <li>(11) People face many problems when arriving in the camps.</li> <li>(12) Lack of water and sanitation in the camp.</li> <li>(13) People are forced to buy water.</li> <li>(14) Adult and children died because of living conditions.</li> <li>(15) Increase of diseases (infectious diseases in particular)</li> <li>(16) Children die out of common diseases (malnutrition, diarrhea, measles)</li> <li>(17) Lack of drugs and adequate health facilities.</li> <li>(18) Lack of proper shelter</li> <li>(19) Renting of land for cultivation in the camp. In order to cultivate people has to rent land.</li> <li>(20) Lack of firewood and difficulties for collecting wood, particularly in the case of older women</li> <li>(21) Hunger</li> <li>(22) Difficulties in food access and food distribution in the camp.</li> </ul>
1997	<ul style="list-style-type: none"> <li>(1) People live under threat from insecurity and diseases.</li> <li>(2) The government sent some Acholi people to prison.</li> <li>(3) The government takes livestock and other animals.</li> <li>(4) Acholi people discontented with the government.</li> <li>(5) Lack of firewood and difficulties for collecting wood, particularly in the case of older women.</li> <li>(6) Children die out of common diseases (malnutrition, diarrhea, measles)</li> <li>(7) Renting of land for cultivation (camp)</li> </ul>
1998	<ul style="list-style-type: none"> <li>(1) People live under threat from insecurity and diseases.</li> <li>(2) A bomb was drop in the camp by the armed forces resulting in the killing of some civilians.</li> <li>(3) Government takes away food from civilians (goats, chicken, etc)</li> <li>(4) Retaliation of rebels had consequences for civilian population at the camp: 5 of our people were killed in the camp and many were injured in addition.</li> <li>(5) Lack of safe water due to the increased population in the camp (few existing safe water sources for the community)</li> <li>(6) Universal Primary Education (UPE). Education has benefits and negative consequences. UPE provides basic education to their children, however children dropped out of school after seven years i.e. once the UPE support is over (first seven years of primary education)</li> <li>(7) Lack of firewood and difficulties for collecting wood, particularly in the case of older women.</li> <li>(8) Children die out of common diseases (malnutrition, diarrhea, measles)</li> <li>(9) Lack of drugs and adequate health facilities.</li> <li>(10) Lack of proper shelter</li> <li>(11) Renting of land for cultivation (camp)</li> </ul>

YEAR	EVENT
1999	<ul style="list-style-type: none"> <li>(1) People live under threat from insecurity and diseases.</li> <li>(2) Government takes away food from civilians (goats, chicken, etc)</li> <li>(3) Lack of safe water due to the increased population in the camp (few existing safe water sources for the community)</li> <li>(4) Universal Primary Education (benefits and negative consequences)</li> <li>(5) Lack of firewood and difficulties for collecting wood, particularly in the case of older women.</li> <li>(6) Children die out of common diseases (malnutrition, diarrhea, measles)</li> <li>(7) Lack of drugs and adequate health facilities.</li> <li>(8) Lack of proper shelter</li> <li>(9) Difficulties in food access and food distribution in the camp</li> </ul>
2000	<ul style="list-style-type: none"> <li>(1) People live under threat from insecurity and diseases.</li> <li>(2) Government takes away food from civilians (goats, chicken, etc)</li> <li>(3) Lack of firewood and difficulties for collecting wood, particularly in the case of older women</li> <li>(4) Children die out of common diseases (malnutrition, diarrhea, measles)</li> <li>(5) Lack of drugs and adequate health facilities.</li> <li>(6) Difficulties in food access and food distribution in the camp.</li> <li>(7) Lack of proper shelter</li> </ul>